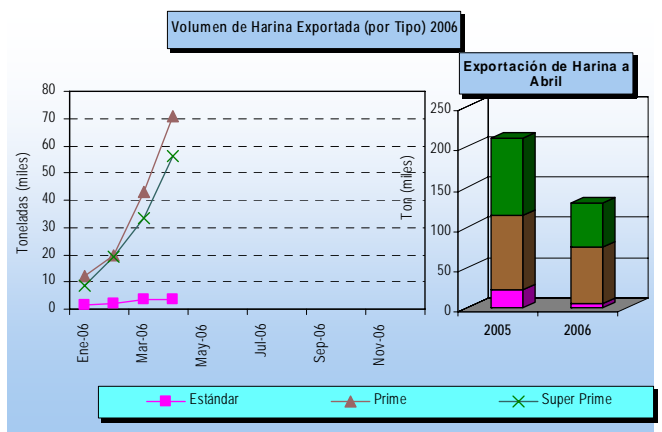
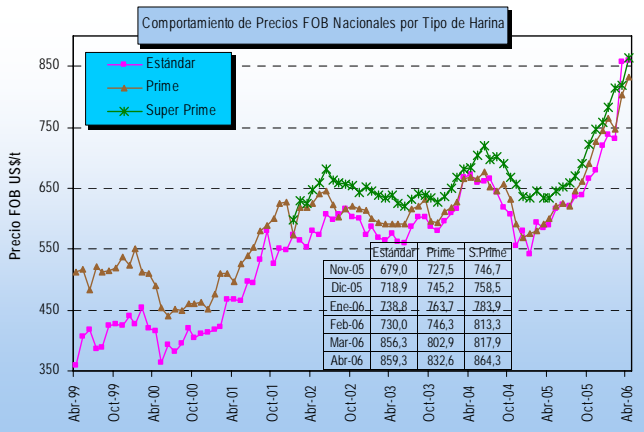
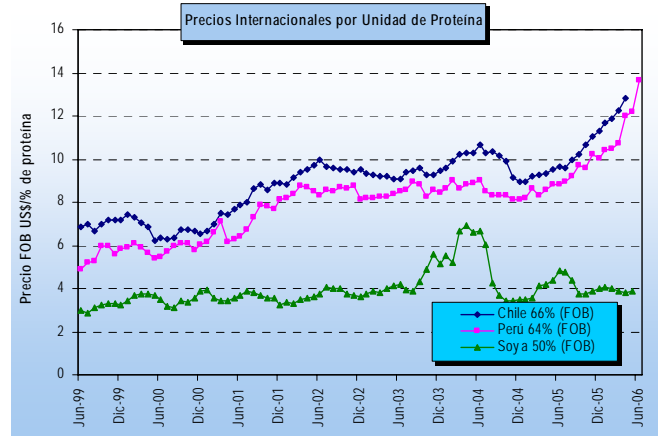
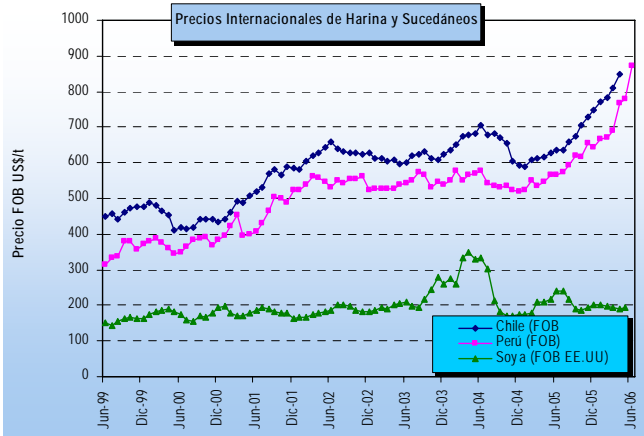
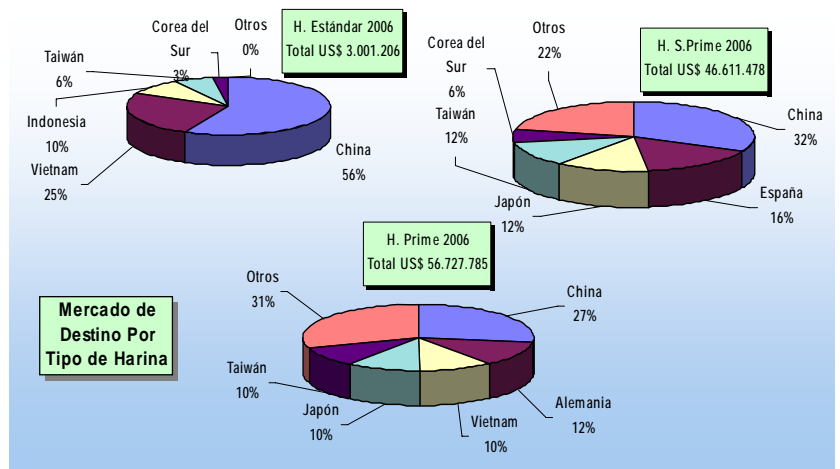
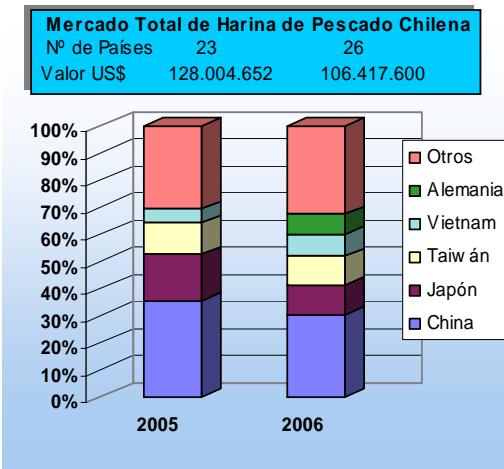


FICHA HARINA DE PESCADO (N° 6/06)
DAS - Subsecretaría de Pesca
(Abril 2006)



Nota: La glosa arancelaria de la Harina Súper Prime se abre en enero de 2002



* La información nacional (exportaciones) se encuentra actualizada abril-2006; la de harina de soya (Chicago-EE.UU) a mayo-2006; la harina de Perú al 20 de junio-2006.