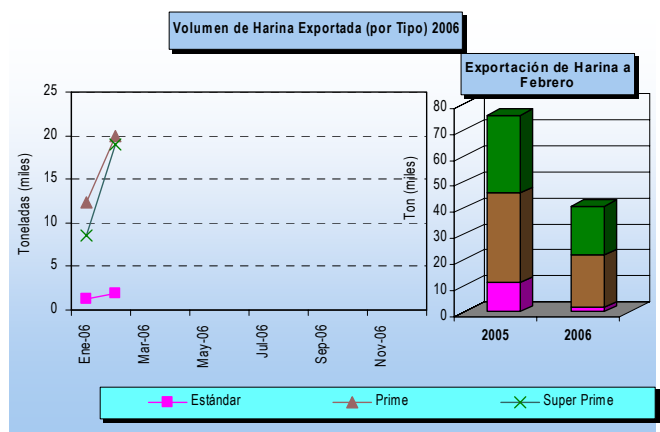
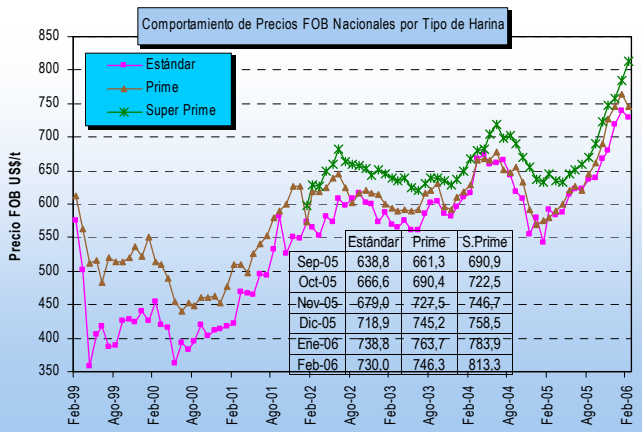
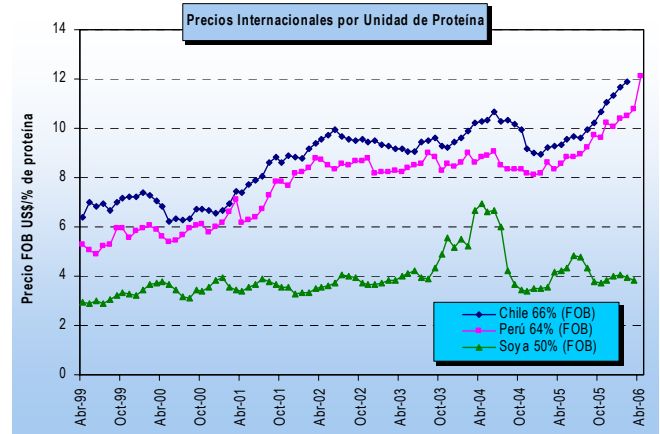
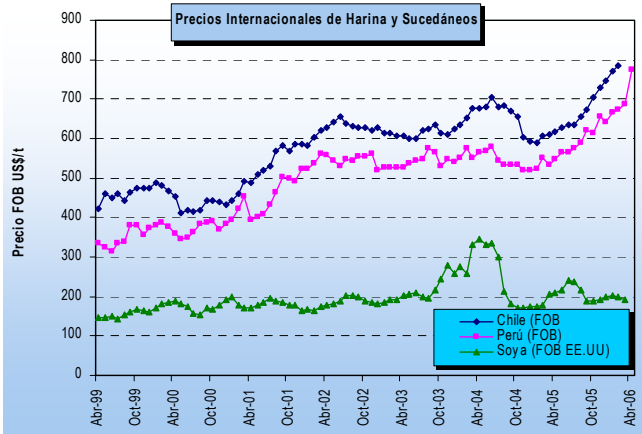
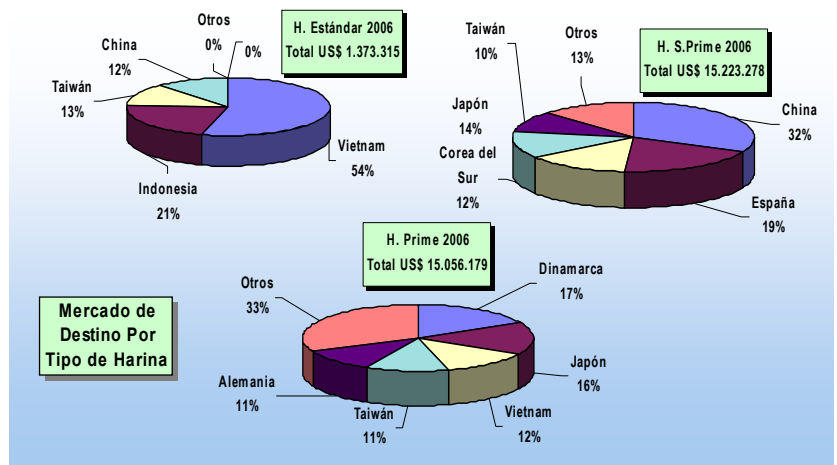
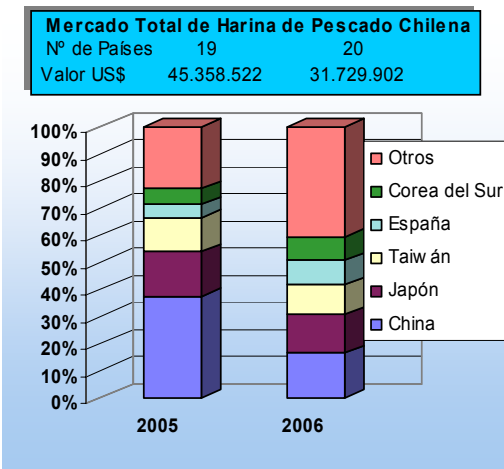


FICHA HARINA DE PESCADO (N° 4/06)
DAS – Subsecretaría de Pesca
(Febrero 2006)



Nota: La glosa arancelaria de la Harina Súper Prime se abre en enero de 2002



* La información nacional (exportaciones) se encuentra actualizada febrero-2006; la de harina de soya (Chicago-EE.UU) a marzo-2006; la harina de Perú al 16 de abril-2006.