



# ***Dialoguing Towards a Sustainable Salmon Farming Industry***

***Katherine Bostick  
World Wildlife Fund  
March 20, 2006***





# World Wildlife Fund (WWF)

- Since it was founded in 1961, World Wildlife Fund's mission has been the conservation of nature
- With nearly 1.2 million members in the U.S. and another 4 million worldwide, WWF is the largest privately financed conservation organization in the world.
- To date, WWF has undertaken more than 13,100 projects in 157 countries.





# Why WWF and Aquaculture?

- Our responsibility is to look at global trends, impacts and opportunities
- Limits of traditional conservation approaches
- Interests in reducing impacts of human use of natural resources
- Concerns about the impacts of fishing
- Aquaculture is the fastest growing food production system globally
- Aquaculture can take pressure off of wild fisheries
- Aquaculture uses approximately 50% of all fishmeal and 80% of global fish oil





# Consortium on Shrimp Farming and the Environment

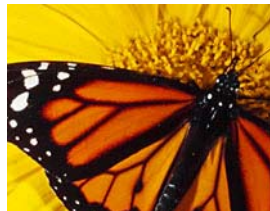
**World Bank**

**NACA**

**FAO**

**WWF**

**UNEP**







# Salmon Aquaculture Dialogue

**Develop and implement verifiable environmental and social performance levels that measurably reduce or eliminate key impacts of salmon farming and are acceptable to stakeholders.**





# Salmon Aquaculture Dialogue

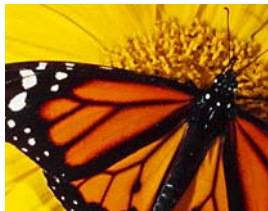
**Recommend standards that achieve these performance levels while permitting the salmon farming industry to remain economically viable.**





# Regulations

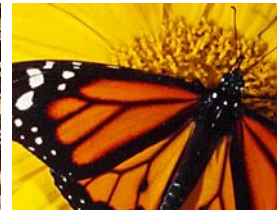
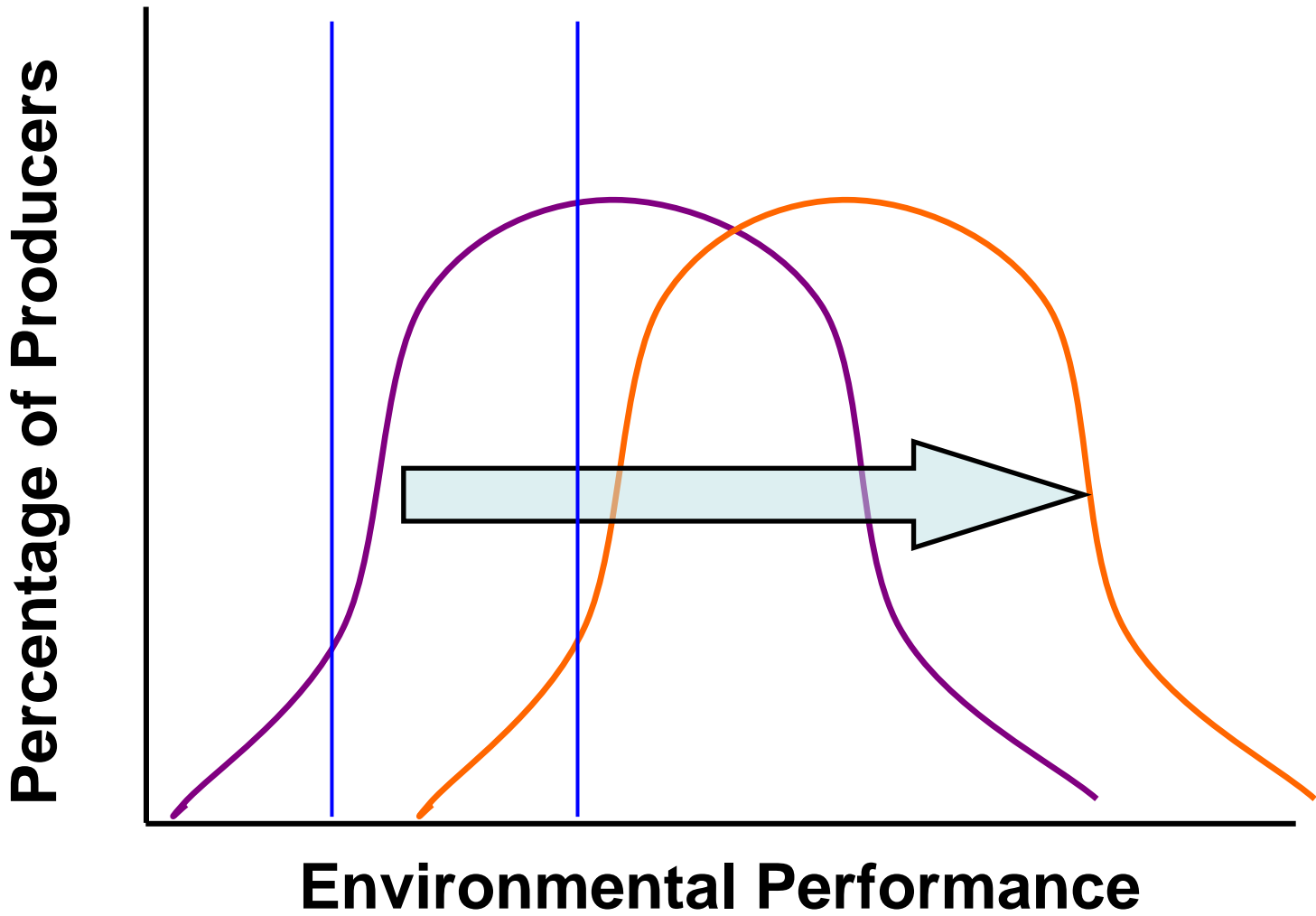
There is a role for both regulatory and voluntary approaches to minimizing environmental impact.







# Accelerating Adoption of Better Practices





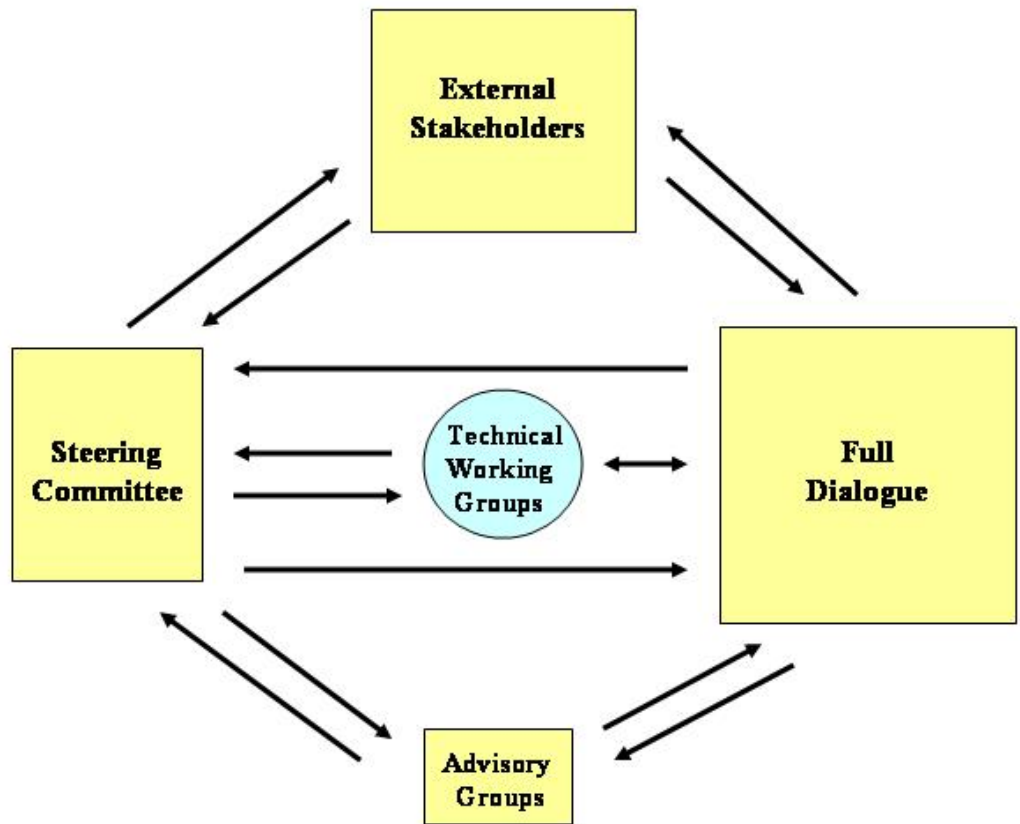
# Salmon Aquaculture Dialogue

- Seven meetings
- Developed and strengthened relationships and shared information
- Agreed upon goals and objectives
- One report produced on salmon aquaculture feed and the environment





# Salmon Dialogue Structure

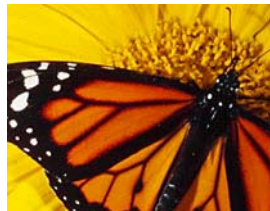




# Concerns with salmon aquaculture

---

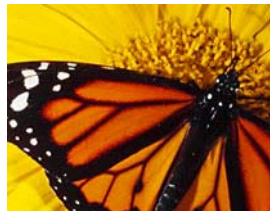
- Social impacts
- Nutrient loading & carrying capacity
- Chemical inputs
- Benthic impacts & siting
- Disease transfer and treatment
- Escapes
- Feed





# Current Status

- Technical working groups to produce state of information reports in 2006
- Reports are a basis for common understanding among Dialogue participants
- Reports serve to identify research that should be carried out in order to develop standards





# Chile and the Dialogue

- Salmon Aquaculture Dialogue has international focus while recognizing differences among countries
- Chile stands out from other salmon producing nations
- Need to ensure Chilean situation appropriately examined in Dialogue





# Thank You

<http://worldwildlife.org/cci/aquaculture.cfm>

