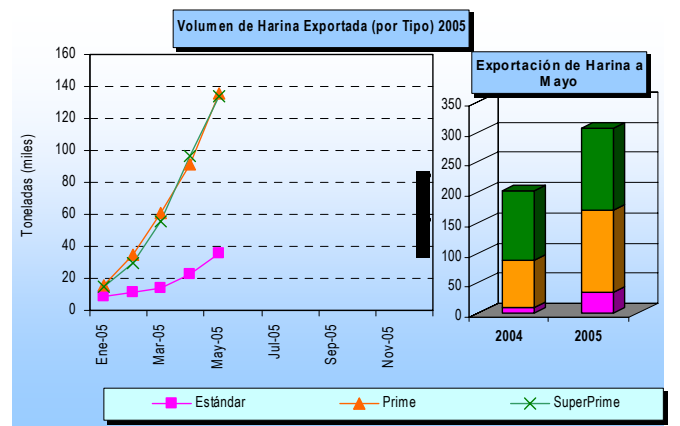
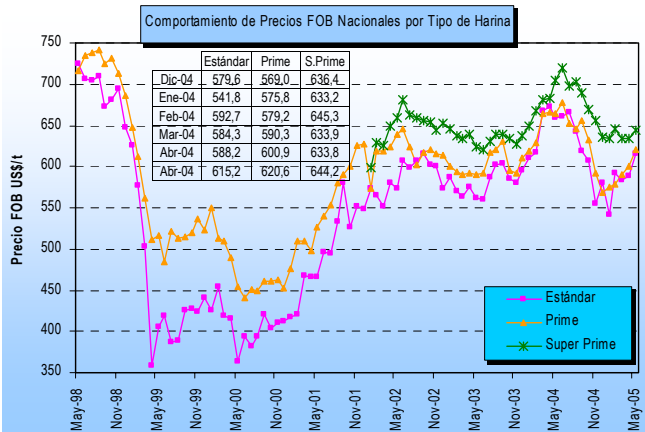
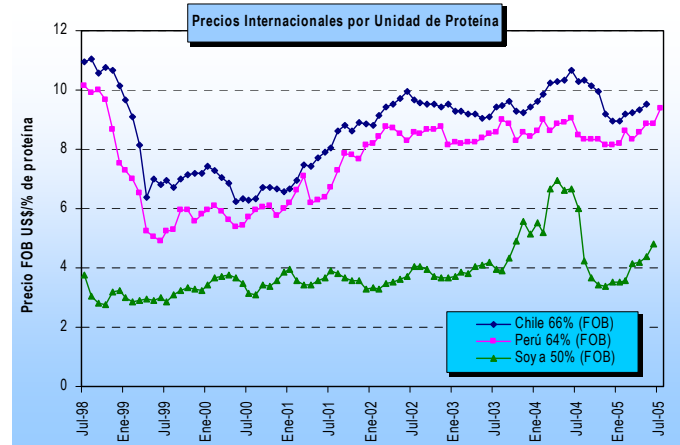
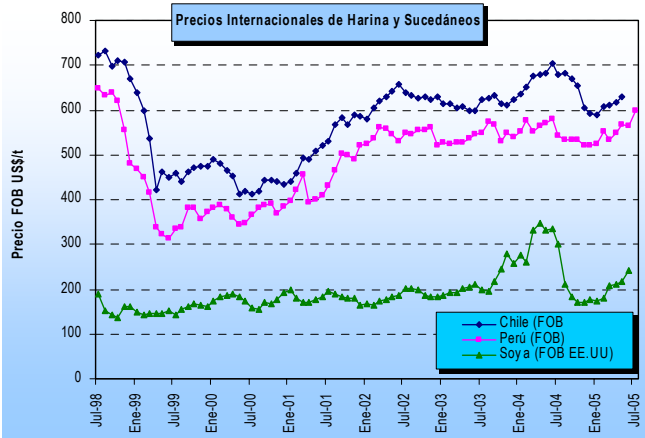
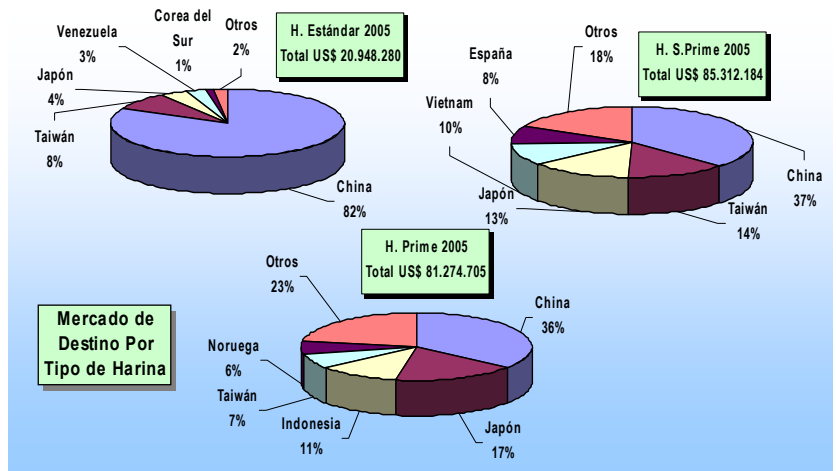
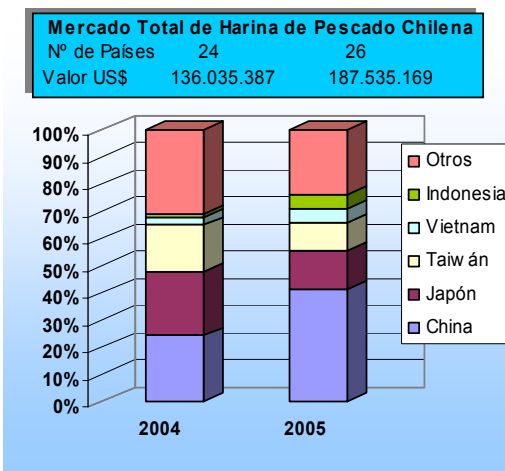


FICHA HARINA DE PESCADO (Nº 7/05)

DAS – Subsecretaría de Pesca (Mayo 2005)



Nota: La glosa arancelaria de la Harina Súper Prime se abre en enero de 2002



* La información nacional (exportaciones) se encuentra actualizada mayo del 2005; la de harina de soya a junio del 2005; la harina de Perú al 15 de Julio del 2005.