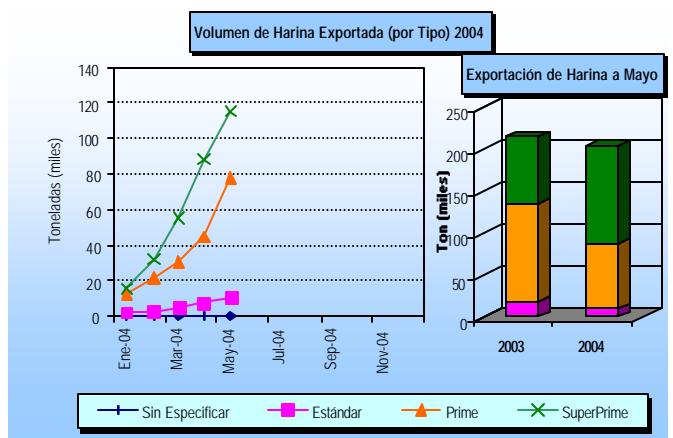
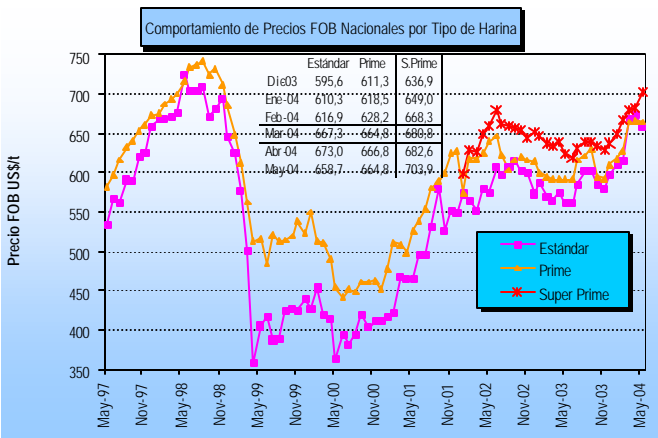
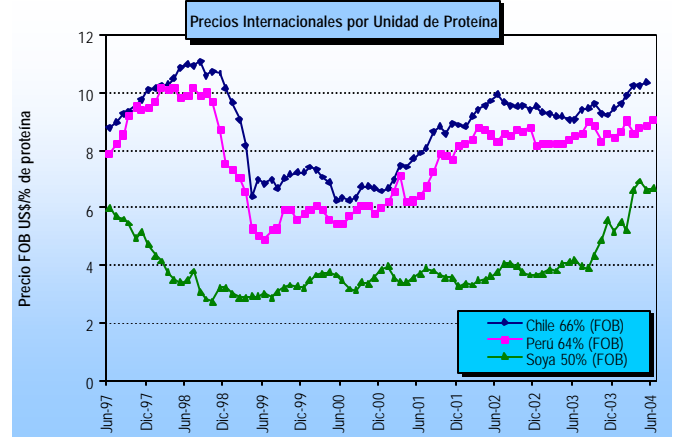
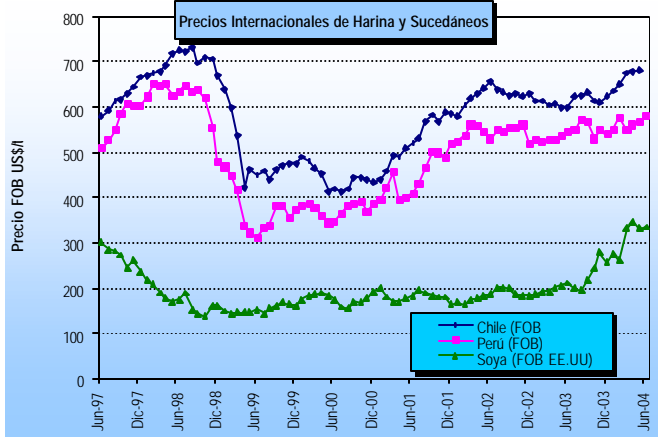


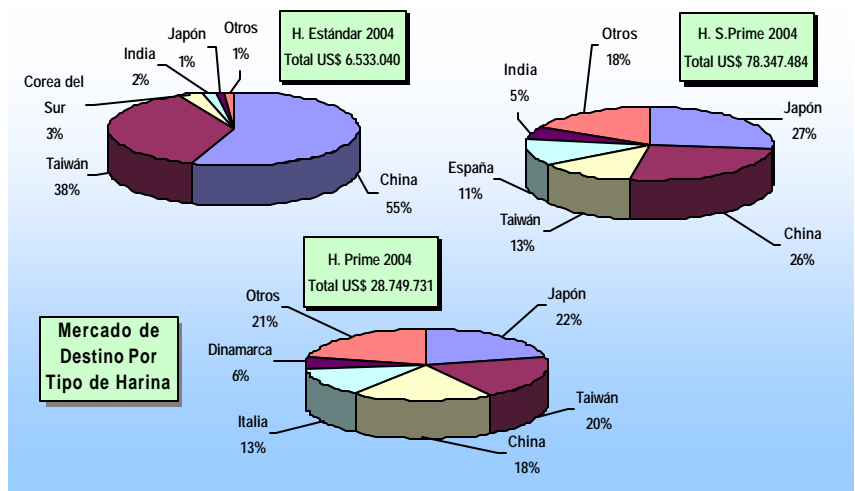
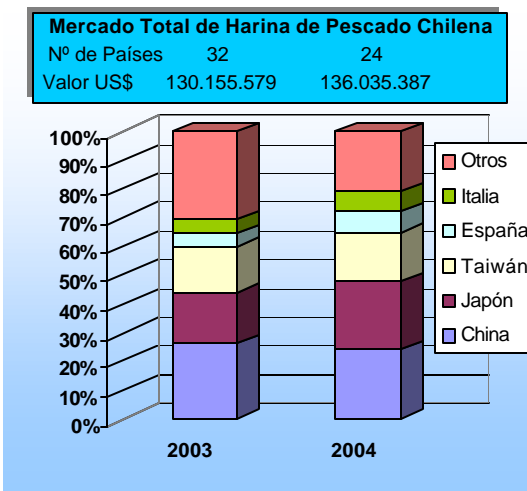
FICHA HARINA DE PESCADO (Nº 7/04)

DAS – Subsecretaría de Pesca

(Mayo2004)



Nota: La glosa arancelaria de la Harina Super Prime se abre en enero de 2002



* La información nacional (exportaciones) se encuentra actualizada mayo del 2004; la internacional a junio del 2004.