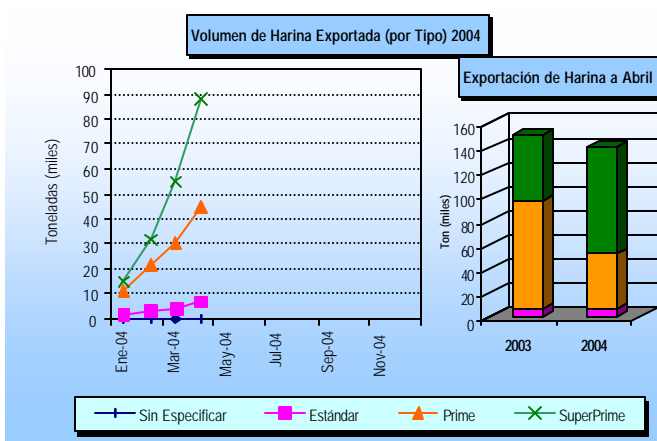
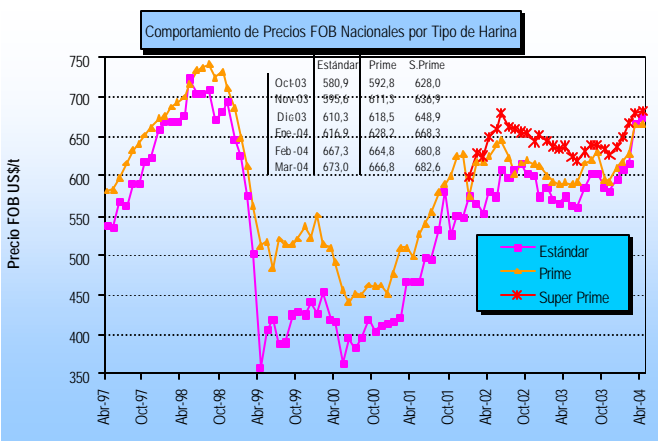
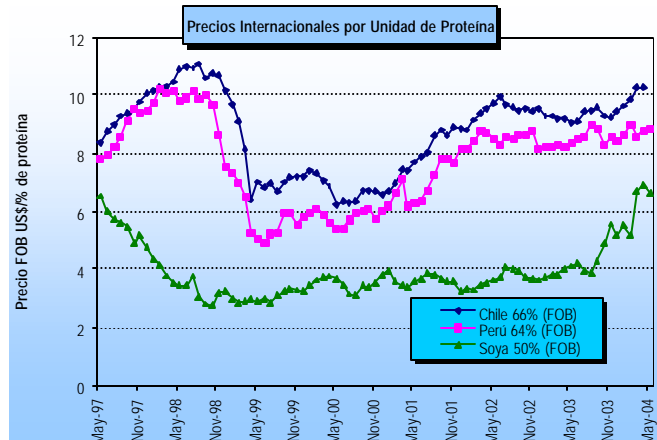
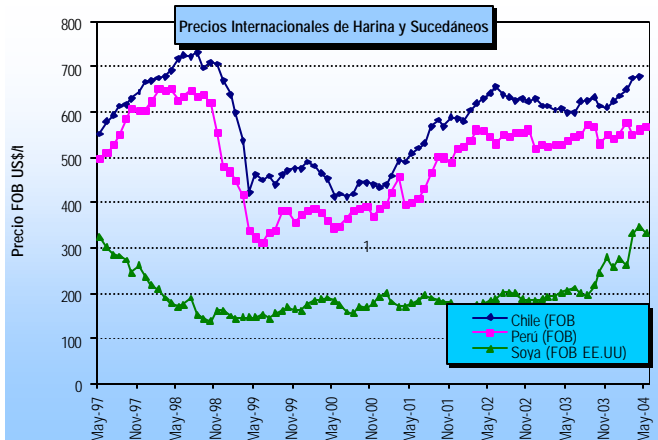
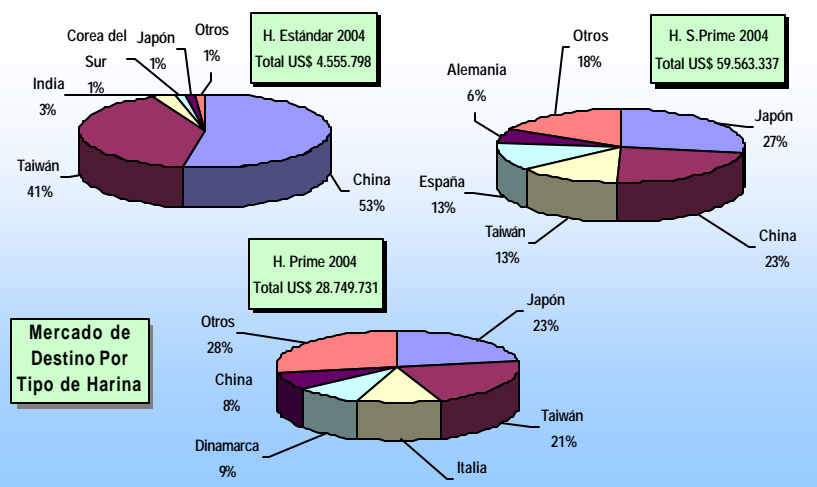
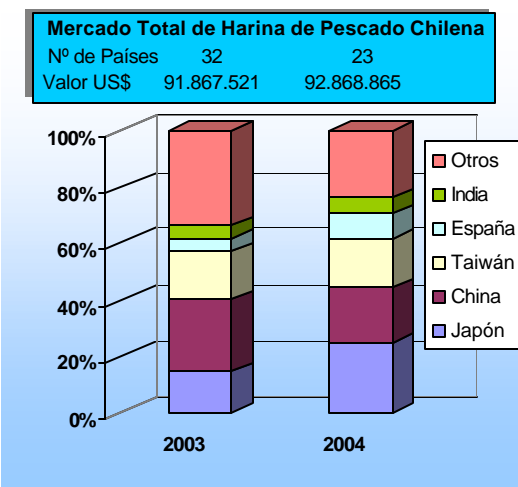


FICHA HARINA DE PESCADO (Nº 6/04)

DAS – Subsecretaría de Pesca (Abril 2004)



Nota: La glosa arancelaria de la Harina Súper Prime se abre en enero de 2002



* La información nacional (exportaciones) se encuentra actualizada abril del 2004; la internacional a mayo del 2004.