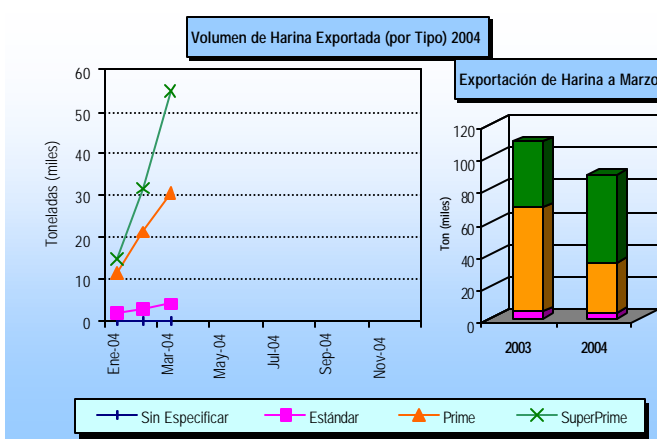
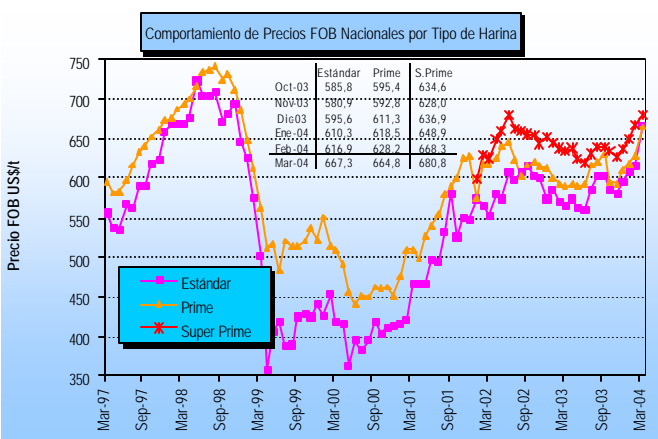
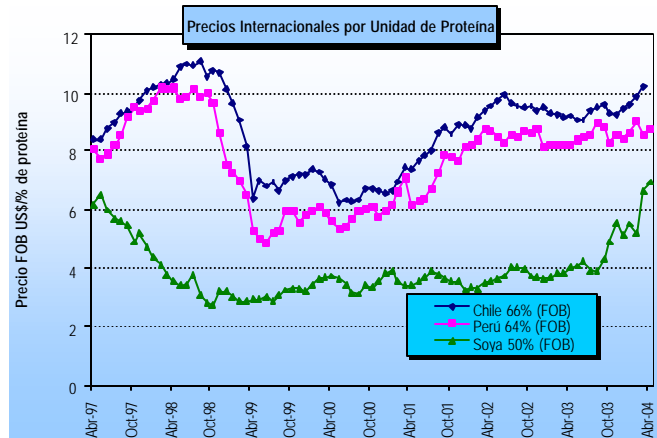
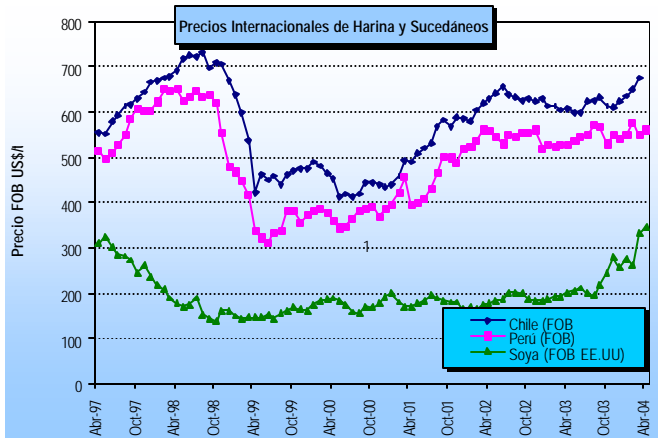


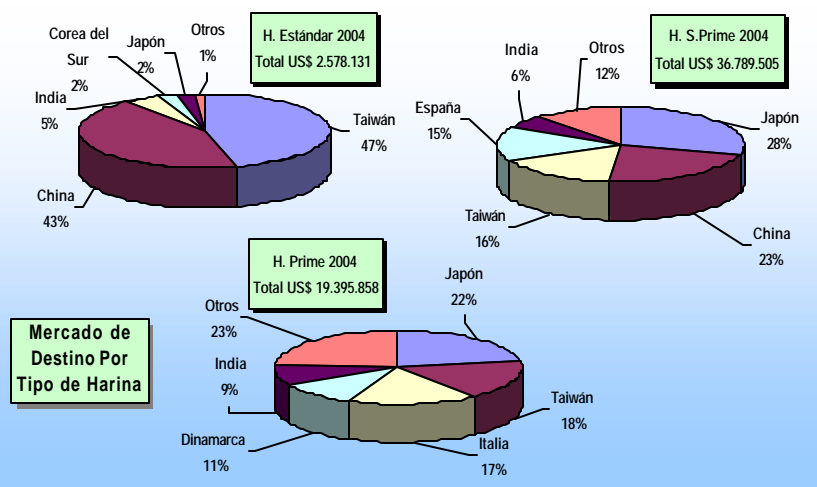
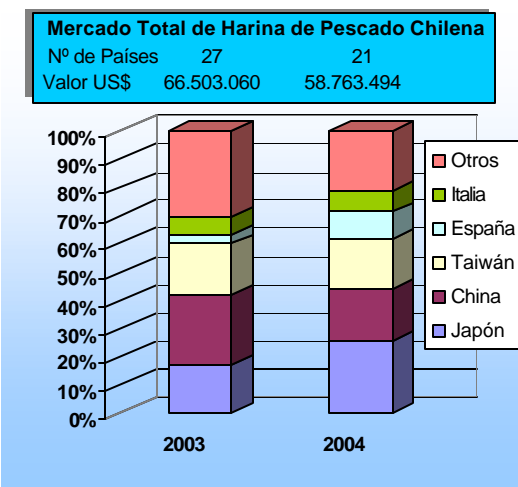
FICHA HARINA DE PESCADO (Nº 5/04)

DAS – Subsecretaría de Pesca

(Marzo 2004)



Nota: La glosa arancelaria de la Harina Super Prime se abre en enero de 2002



* La información nacional (exportaciones) se encuentra actualizada marzo del 2004; la internacional a abril del 2004.