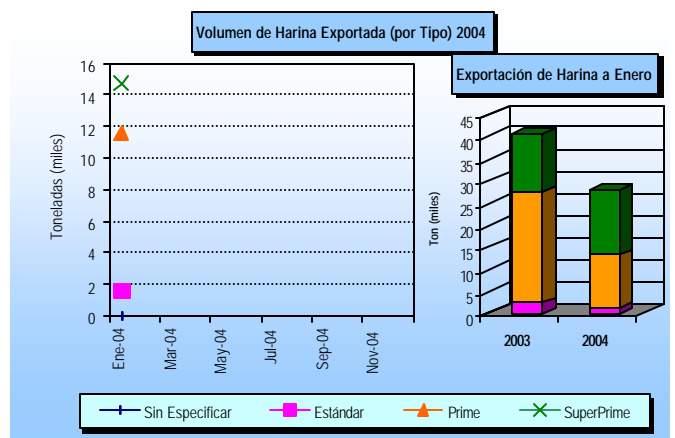
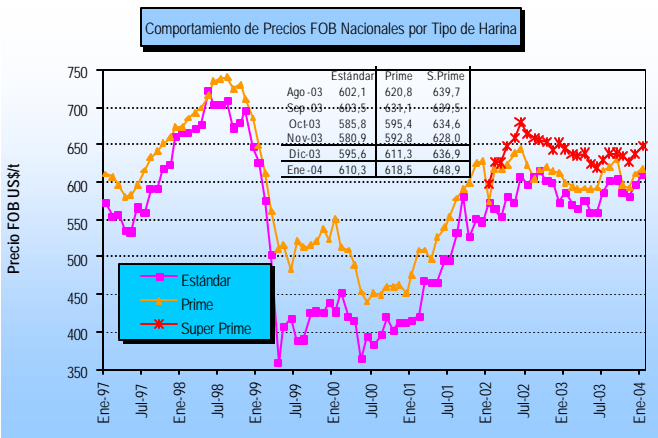
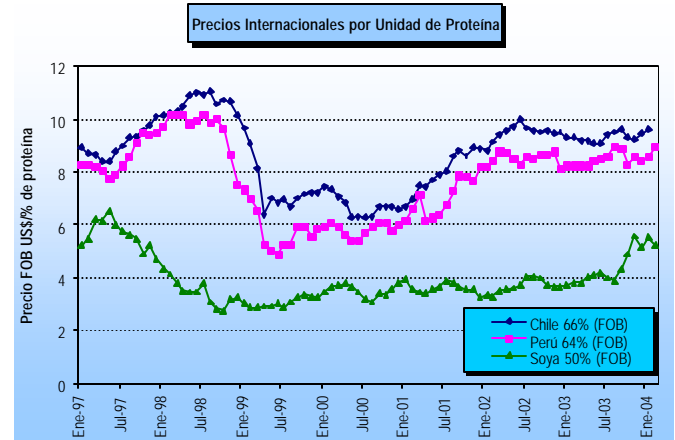
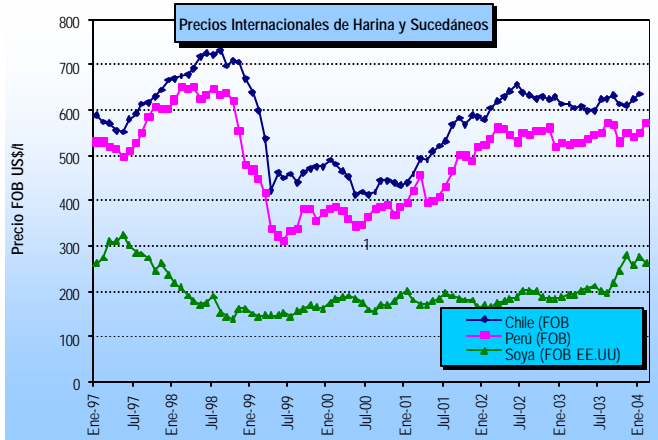
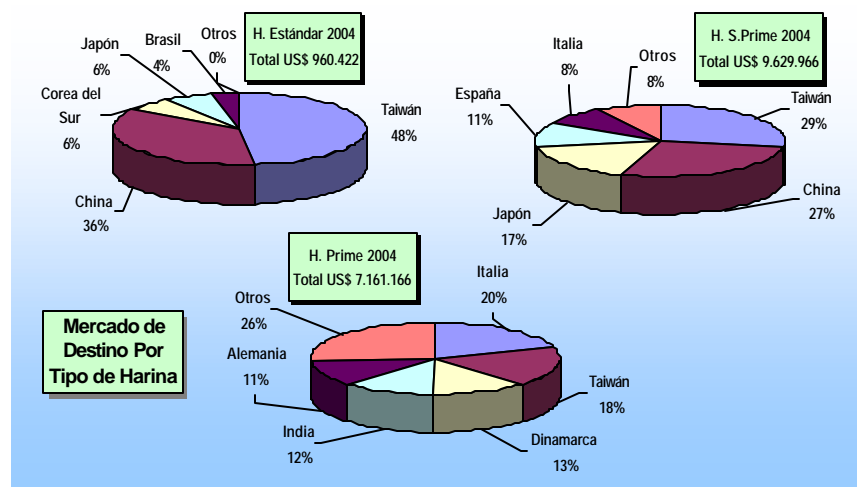
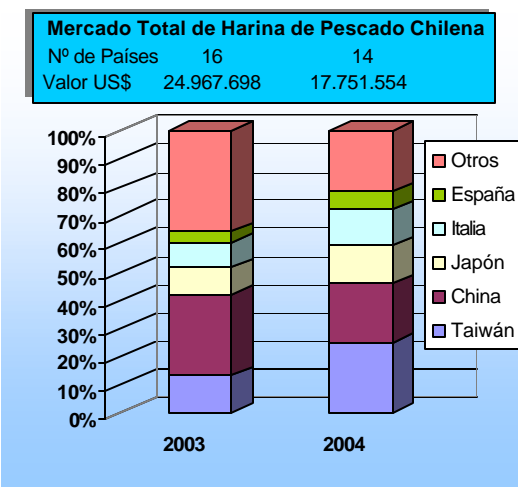


FICHA HARINA DE PESCADO (Nº 3/04)

DAS – Subsecretaría de Pesca (Enero 2004)



Nota: La glosa arancelaria de la Harina Super Prime se abre en enero de 2002



* La información nacional (exportaciones) se encuentra actualizada a enero del 2004; la internacional a febrero del 2004.